



**LMA-3 Multi-sensor Auxiliary Input Device  
User Manual**

1	Overview.....	3
1.1	Differential Inputs .....	5
2	The Innovate Log-Chain concept.....	6
2.1	Log-Chain of 5 channels consisting of LMA-3 alone. ....	7
2.2	Log-Chain of 6 channels consisting of LMA-3 and LM-1.....	7
2.3	7-channel Log-Chain example with 2 AFR channels.....	7
2.4	17-Channel Log-Chain example .....	7
3	Connecting the LMA-3.....	8
3.1	Connecting the LMA-3 to an LM-1 .....	8
3.2	Using the LMA-3 as part of a Log-Chain .....	8
3.3	Connecting external sensor signals.....	8
3.4	Powering external sensors.....	9
3.5	Connecting an RPM signal .....	9
3.6	Connecting Type K Thermocouples .....	9
4	Mounting and calibrating the LMA-3 .....	11
4.1	Calibrating the Acceleration Sensor to the mounting position .....	11
5	Setting up the input channels.....	12
5.1	Programming the LMA-3 with the setup buttons.....	12
6	RPM measurement .....	13
6.1	RPM Measurement basics.....	13
6.1.1	Four-Stroke Engines.....	13
6.1.2	Two-Stroke Engines .....	13
6.1.3	Rotary Engines (Wankel Engine) .....	14
6.2	How the LMA-3 determines RPM .....	14
6.3	Programming the RPM input.....	15
6.4	Using the LMA-3 with the Inductive Clamp.....	16
6.4.1	Inductive Clamp Usage.....	16
6.5	Using the RPM-Converter with pulsed RPM input (Tach) signals.....	17
7	Measuring Pressures .....	17
7.1	Measuring MAP.....	17
7.2	Measuring boost/vaccum.....	17
8	Measuring Frequencies, custom RPM, or speed.....	18
9	Measuring duty cycle.....	18
10	Measuring external 5V sensors .....	20
10.1	Calibrating external 5V inputs .....	20
10.1.1	Calibrate using built-in sensor power .....	20
10.1.2	Calibrate using external sensor power .....	20
10.1.3	Restoring a channel to factory calibration .....	21
11	Programming the LMA-3 with LM Programmer.....	23
11.1	Changing the device name.....	23
11.2	Updating the firmware .....	24
11.3	Input 1 Configuration .....	24
11.3.1	Measuring RPM .....	24
11.4	Input 2 Configuration .....	25
11.5	Input 3 configuration.....	25
11.5.1	Measuring Custom RPM.....	25
11.5.2	Measuring Frequency .....	25
11.5.3	Measuring Speed.....	26
11.6	Input 4 configuration.....	27
11.7	Input 5 Configuration .....	27
12	Kit Contents .....	28
	Appendix A: Limited Warranty.....	29
13	Revision History.....	30

## **1 Overview**

The LMA-3, also called the 'AuxBox', was originally designed as a peripheral for the LM-1 digital Lambda meter. The LM-1 has 5 auxiliary inputs. The LMA-3 populates these inputs with either built-in sensors or user-connectable external sensors. The LMA-3 may also be used as a stand-alone 5 channel MTS compatible input device (see Chapter 2 for more details).

Each of the five inputs of the LMA-3 can be user configured for different functionalities.

The 7-segment display of the LMA-3 (Function indicator) will show which functionality is selected.

The following tables show the functionality of each of the 5 inputs of the LMA-3:

**Input 1 Functions**

Function Indicator	1	2	=
Functionality	RPM (0..10230)	RPM (0..20460)	External 0..5V sensors

**Input 2 Functions**

Function Indicator	1	2	3	4	5	=
Functionality	Thermocouple EGT range (0..1093 degC, 32..1999 degF)	Thermocouple CHT range (0..300 degC, 32..572 degF)	Side Force (+ 2g )	Side Force (+ 1g)	Side Force (+ 0.25g)	External 0..5V sensors

**Input 3 Functions**

Function Indicator	1	2	F	=
Functionality	Duty Cycle	N/A	Frequency (straight frequency, Speed sensor, Custom RPM range	External 0..5V sensors

**Input 4 Functions**

Function Indicator	1	2	3	4	F	d	=
Functionality	MAP (1 bar) (0..101.3 kPa)	MAP (3 bar) (0..304.1 kPa)	Vaccum (0..30 inHg Vacc)	Vaccum/Boost (-14.7PSI... 29.4 PSI)	Frequency (straight frequency, Speed sensor, Custom RPM range	Duty Cycle	External 0..5V sensors

## ***Input 5 Functions***

Function Indicator	1	2	3	F	d	=
Functionality	Acceleration (+- 2g)	Acceleration (+- 1g)	Acceleration (+- 0.25g)	Frequency (straight frequency, Speed sensor, Custom RPM range)	Duty Cycle	External 0..5V sensors

The LMA-3 also can act as a power supply for user supplied external sensors. The 5V output of the LMA-3 can supply up to 300mA of current. For this functionality the LMA-1 must be connected to a switched 12V source in the car. It converts the 12V to 5V to power the sensors.

When no external sensors need to be supplied with 5V power, the 12V connection can be left open.

### ***1.1 Differential Inputs***

The LMA-3's external connections are differential. This means that each input channel has 2 input terminals. A + terminal and a – terminal. This is to eliminate ground offsets in the signal. Many times the ground point of a sensor is at a different ground than the LMA-3. Because each electronic device can only measure a voltage referenced to it's own ground, differences in grounding can introduce measurement errors. The LMA-3 measures the sensor signal's ground with the – input and then measures the difference between the + and the – input. This way it "recreates" the sensor signal's own ground reference as if this input were referenced directly to that sensor's ground.

**The – input is NOT a ground itself. It is a ground reference input.**

## 2 The Innovate Log-Chain concept

LogWorks 2.0 has the capability to log, display and analyze up to 32 engine parameters. Most users will use less though. Each of the MTS components reads between 1 and 6 engine parameters. To interface a multitude of MTS components to LogWorks with a single connection, the Innovate LogChain concept was introduced.

The LMA-3 can be used as a MTS component in a Log-Chain. Each of the MTS components has two serial ports (except the LM-1, which has only one). One serial port is designated as IN-port, the other as OUT port. The OUT-port of one device is connected to the IN-port of the next device and so on. This way devices can be 'daisy-chained' to build a log-chain for up to 32 channels total. The OUT-port of the last device is connected to the computer for logging or downloading of logged data.

The device that's first in the chain is special. It determines the logging sample rate. The first device in the chain sends a data packet containing its channel data (a sample) to the next device (downstream, left to right in the diagram) every 81.92 milliseconds. The next device appends its data to that packet and hands that packet to the next device downstream and so on. At each device the packet grows in length. The devices in the chain synchronize their sampling of the engine parameters to the packets, so that all the channels in a packet together represent the same instance in time. At the downstream end of the log chain (OUT-port of the last device) a computer or external logger can be connected to store or display the stream data. The XD-1 display is such a device.

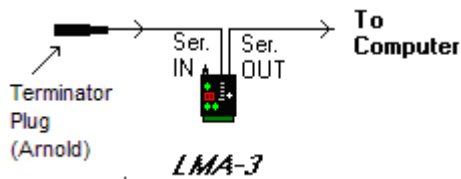
**This also means that the complete channel data set is ONLY available at the end of the log-chain. A datalogger capable of recording the log-chain data-stream therefore MUST be placed at the end of the log-chain. This includes lap-top computers or other loggers.**

Commands for individual devices are sent 'upstream'. A device (incl. a computer or an XD-1) can send commands to the devices upstream of itself, but not downstream. Commands can include start-stop recording, calibration/configuration commands and so on. Only the device directly upstream of the command originator of course will receive the command. This device then decides, depending on the command, whether to execute the command and whether to pass it on. An example of a case where the command is executed but not passed on is the start-stop record command. The first upstream device capable of logging internally will execute the command, but not pass it on.

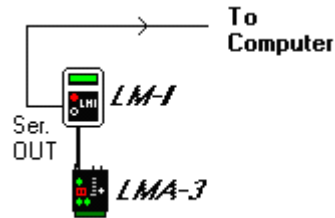
As said before, the first device is special because it is the synchronization source for the entire chain. By plugging its IN-port with the supplied terminator connector, a device can detect that requirement when it powers up. The terminator connector just connects the transmit and receive line of the IN-port together. Each device sends a special command out on it's IN port when it powers up. This command is ignored and not passed on by any device if received on it's OUT port. If the sending device immediately receives that command on its IN-port again, because the terminator is plugged in, it assumes it is the first and special device in the chain. The LM-1, having only one serial port, is ALWAYS a special device and MUST be connected to the beginning of the chain.

The following are some examples of Log-Chains using the LMA-3 and other MTS devices.

## 2.1 Log-Chain of 5 channels consisting of LMA-3 alone.

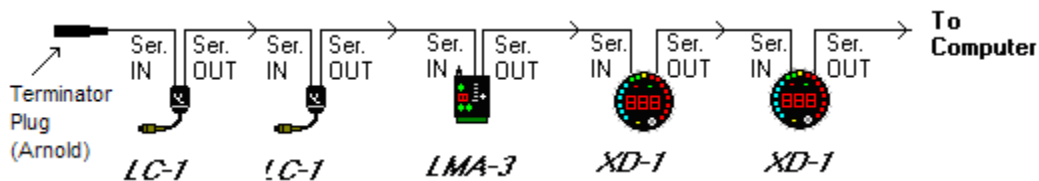


## 2.2 Log-Chain of 6 channels consisting of LMA-3 and LM-1



This allows to record LMA-3 data in the LM-1.

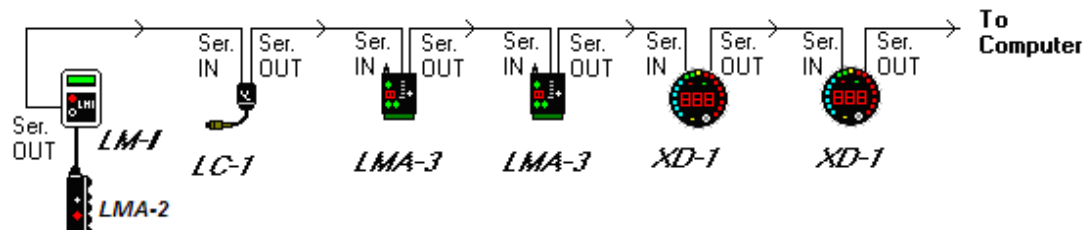
## 2.3 7-channel Log-Chain example with 2 AFR channels.



Notice that the LC-1's are connected **BEFORE** the first LMA-3. LC-1's should always be connected before the first LMA-3.

## 2.4 17-Channel Log-Chain example

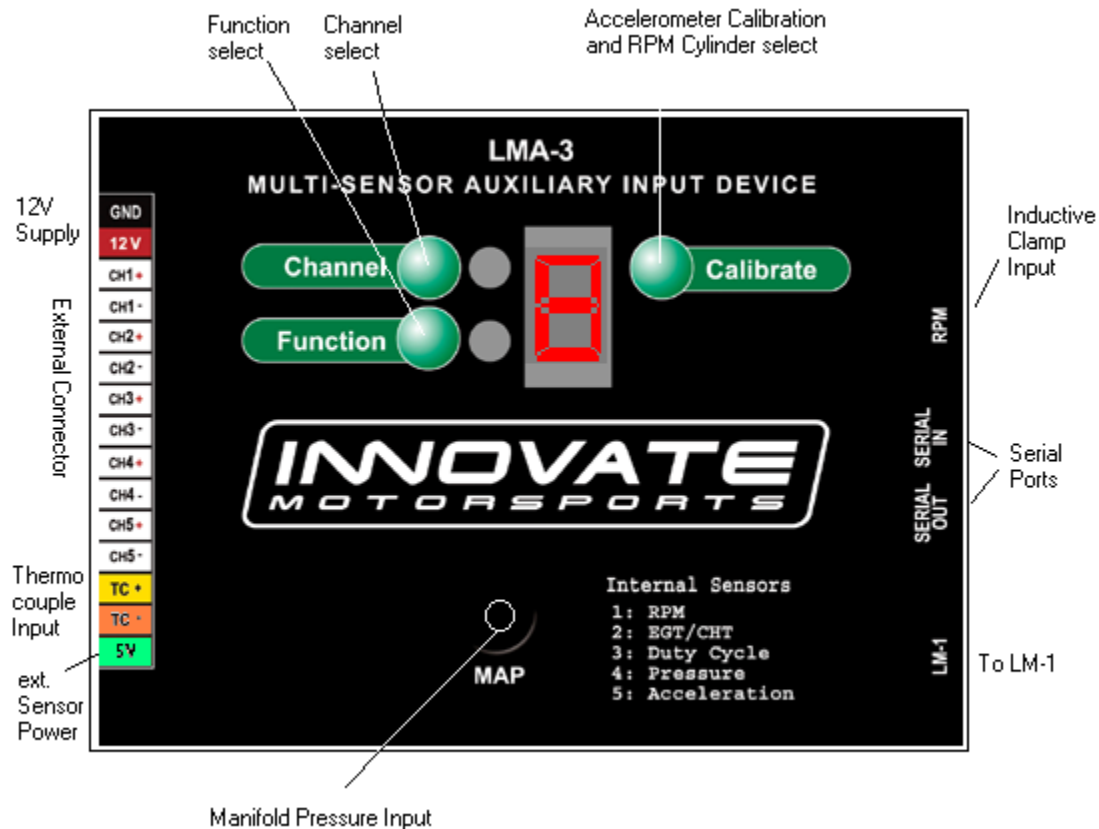
The example chain consists of a LM-1/LMA-2, a LC-1, two LMA-3's and 2 XD-1's. In this case the chain has 17 channels (6 from LM-1, 1 from LC-1 and 5 each from the two LMA-3's).



Devices attached to the LM-1's analog input count as being part of the LM-1's 6 channels. They don't count extra. XD-1's do not contribute any channels, so you can add as many as needed.

### 3 Connecting the LMA-3

The LMA-3 looks like this:



#### 3.1 Connecting the LMA-3 to an LM-1

Plug the supplied Mini-DIN8 to Mini-DIN8 cable in the LM-1 port of the LMA-3. Plug the other end of the cable into the AUX-IN port of the LM-1.

The LMA-3 is now operable and is powered by the LM-1.

**NOTE:**

**The 5V power supply for external sensors should not be used when the LMA-3 is solely powered by the LM-1.**

#### 3.2 Using the LMA-3 as part of a Log-Chain

If the LMA-3 is the first device in the Log-Chain, it's Serial IN port MUST be plugged by the supplied Terminator plug. The Terminator is a 2.5mm Stereo connector with no cable attached.

#### 3.3 Connecting external sensor signals

For each external connection you can connect the external sensor's output to the CHx+ connection. Connect the CHx- connection to the ground of the sensor. Make sure the sensor output signal does not exceed 5V. The LMA-3 is protected if sensor signals exceed that (up to 40V for most inputs), but it cannot measure beyond a 5V signal.



### 3.4 Powering external sensors

If you want to power external sensors, connect a switched 12V supply (switched on when the cars ignition system is on) to the connection marked 12V on the left side. Connect the connection marked GND to the cars chassis ground. At the connection marked 5V you can connect external sensors. External sensors don't HAVE to be powered by the LMA-3. The 5V output is a convenience for external sensors when no 5V supply is available. The 5V supply can power sensors with a total power consumption of up to 300mA.

### 3.5 Connecting an RPM signal

For RPM measurement you can either connect a tach signal to the CH1+ input or plug an inductive clamp into the 3.5 mm stereo socket marked RPM. See chapter 6 for RPM measurement details.

### 3.6 Connecting Type K Thermocouples

Thermocouples are used to measure temperatures by relying on the phenomena where a junction of any two different metals (Copper and Iron, for example) will generate a small voltage. This voltage is dependant upon which two metal are used, and the temperature of the junction. This phenomena is known, formally, as the "Seebeck Effect". Because every junction of different metals contributes its own voltage into the measurement, it is important to have as few junctions between dissimilar metals as possible in order to record an accurate measurement. This is why thermocouple wire is made completely of two different metals. A "Type K" thermocouple is composed of Cromel and Alumel; one lead being made of each (the red and yellow leads).

To make a thermocouple, strip approximately 3/4" of insulation from one end of the thermocouple wire. Twist the two exposed metal ends together. You may optionally solder them, also. But twist them first. Do not solder them in parallel. This will form what is called the "Hot junction". This "Hot junction" is what you will connect to the surface that you want to measure. This is usually either: a) under the copper gasket of a sparkplug for cylinder head temperature (CHT) or, b) clamped to a primary header tube for exhaust gas temperature (EGT).

There is also the "Cold junction." This is where the 2 leads of the thermocouple come together again at the LMA-3 terminals. The LMA-3 has an internal temperature sensor at the T/C input terminals. It uses this sensor to "offset" the effect of the "Cold junction" in the measurement. This is called "Cold junction compensation". Once the effects of the cold junction are neutralized, the LMA-3 can accurately read the temperature of the "Hot junction" which is the twisted lead pair at the opposite end of the thermocouple wire.

One thing that is counter intuitive for many people is that the *negative side of a thermocouple wire is always red*. There are many different types of thermocouple wire; types K, J and T being the most popular. All have a red negative lead and a yellow, black, or blue positive lead respectively. **When connection the thermocouple to the TC terminals on the LMA-3, be sure to connect the yellow lead to the + and red lead to the - terminals.**

Several manufacturers offer EGT "thermocouple probes" which are actually inserted into the exhaust gas stream through a hole in the headers or exhaust manifold. These provide a more accurate measurement of exhaust gas temperature. They are commonly available in types K and J. Only type K will currently work with the LMA-3. To use a thermocouple probe, connect the red and yellow leads of the thermocouple wire to the yellow and red leads of the thermocouple probe. The junction is inside the probe. **You can not use normal copper wire to**

**connect the thermocouple probe to the LMA-3.** You must use thermocouple wire to connect the probe. If you do not, there will be an extra two-metal junction where the Copper wire meets the Constantan wire of the probe. This extra junction will cause a large error in the temperature readings.

Most Thermocouple probes are of the “grounded junction” type. This means that the “hot junction” is also connected to the probe’s body. As this body is connected for example to the exhaust manifold, the sensor wires are essentially grounded through that. The same is true if a home-made thermocouple junction is used as described above by twisting the wires and if that wire-twist is connected to some grounded engine part.

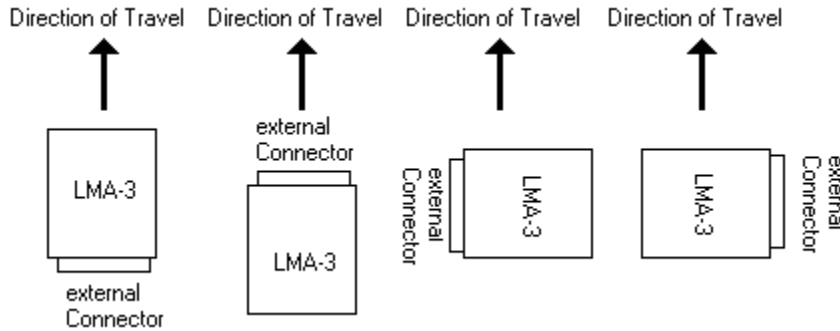
You can check if you have a grounded junction type by measuring between the probe body and one of the Thermocouple wires. If you have continuity, you have a grounded junction.

**The LMA-3 NEEDS a grounded junction.**

***If you don’t have a grounded junction, connect a wire between the TC- input of the LMA-3 and the ground terminal of the LMA-3.***

## 4 Mounting and calibrating the LMA-3


In order to use the acceleration sensor of the LMA-3, care must be taken to mount the LMA-3 correctly on a horizontal surface in the car. The LMA-3 MUST be aligned with the direction of travel. The following pictures show the four possible mounting positions.




The mounting position should not deviate more than 3 degrees from horizontal.

### 4.1 *Calibrating the Acceleration Sensor to the mounting position*


Lay the LMA-3 down on the mounting surface, but don't mount it yet. Switch the LM-1 on to power the LMA-3 or switch the 12V supply to the LMA-3 on if it is powered from a switched 12V supply.

Press the 'Calibrate' button until the digit display shows a blinking C 

If the mounting surface is not within the 3 degrees of horizontal, the acceleration sensor can't be calibrated for zero g and the LMA-3 shows a blinking E for Error: 

After the zero g acceleration calibration is performed, hold the LMA-3 such that the side of the LMA-3 pointing in the intended direction of travel points vertically up. Then press the Calibrate button again until the blinking C shows up.

If the LMA-3 shows the blinking 'E', even when the device is calibrated on a flat, horizontal, surface, the device may need to be reset. To reset the LMA-3's accelerometers, place the device on a flat, horizontal, surface and press and hold all three buttons together until the display shows the letter 'A':

 After this, re-try the above calibration procedure.


You can now mount the LMA-3.

## 5 Setting up the input channels

The LMA-3 can be programmed directly through the setup buttons on the LMA-3. LM Programmer software version 3.05 (or later) allows you to program the LMA-3 via the LM Programmer software. This is necessary for some of the more advanced functionality of the LMA-3. Some of these advanced functions like speed sensing, frequency sensing, custom RPM, and so on require more user input data that cannot be supplied by the simple 3-button interface of the LMA-3.

### 5.1 Programming the LMA-3 with the setup buttons

To program an input channel, repeatedly press the 'Channel' button until the channel number to program appears on the LMA-3 digit display. Then repeatedly press the 'Function' button until the digit display shows the intended function. The digit display will switch rapidly between indicating the input channel number and the set function. The LEDs next to the channel and function buttons will indicate which value is being displayed.

If the function selected is External input, the digit display shows a '=' sign like this: 

Refer to Chapter 1 for the different functions for the inputs.

## 6 RPM measurement

### 6.1 RPM Measurement basics

Most RPM measurement methods use the ignition system of the car as a convenient source of RPM dependent pulses. Other methods use a TDC sensor (one pulse per rotation), cam sensor, or fuel injection pulses (number of pulses/rotation is dependent on the fuel-injection system). Some actually measure the AC frequency created by the car's alternator.

Because the number of pulses per crank rotation is dependent on the ignition system and engine type, a universal RPM measurement method must be adaptable to the different environments encountered. The typical ignition system consists of an ignition coil, a coil driver that switches current to the coil on and off, and a distributor. When current is switched on to the coil, the coil stores energy in its magnetic field. When the current is switched off, that energy gets discharged at a very high voltage pulse on the coil's secondary winding, creating a spark.

A capacitive discharge ignition system (CDI) uses a capacitor to store the spark energy. The capacitor is charged to about 400V and then rapidly discharged over the ignition coil's primary winding. The coil thus only acts as transformer and does not store energy (and can therefore be smaller). The advantage of a CDI system is a very high and fast rising spark voltage (less susceptible to spark fouling). The weakness of the CDI system is the very short duration spark, which might not be long enough to ignite the mixture. Multispark ignition systems try to overcome the inherent weakness by creating multiple spark pulses over some degrees of crank rotation to increase the likelihood of igniting the mixture. The distributor switches the spark voltage to the appropriate spark plug.

#### 6.1.1 Four-Stroke Engines

On a typical 4-stroke engine each spark plug fires once for every two crank rotations. The coil on a distributor-equipped 4-stroke has to create sparks for every cylinder. The number of ignition pulses per crank rotation in this case is the number of cylinders divided by 2.

Some engines have one coil for every 2 cylinders instead of a distributor. The coil fires two spark plugs at the same time. One spark is wasted because it fires one cylinder at the end of its exhaust stroke. Therefore, this system is called a Waste Spark System. Each coil of a Waste Spark System fires once for every crank revolution.

Other distributor-less 4-stroke engines use one ignition coil for every spark plug. This ignition system fires each coil once for every 2 crank revolutions.

Coil-on-Plug ignition systems actually incorporate the ignition coil in a module that plugs directly onto a spark plug and do not have a spark plug wire.

#### 6.1.2 Two-Stroke Engines

On a 2-stroke engine there is a spark for every crank rotation, so the spark frequency doubles compared to a 4-stroke. Very few multi-cylinder 2-strokes have distributors. For those that do, the number of ignition pulses per crank rotation is equal to the number of cylinders. Most two-stroke engines have one coil for every cylinder. The coil fires once for every crank revolution, the same as on a 4-Stroke Waste Spark system.

### 6.1.3 Rotary Engines (Wankel Engine)

A rotary engine consists of a roughly triangle shaped rotor rotating in a roughly elliptical chamber. The three spaces left between the chamber and the rotor go through the four cycles of a four-stroke engine for each rotation of the rotor. A single (or dual) spark plug at a fixed position in the chamber ignites the mixture of each space in sequence. Therefore, a rotary engine requires 3 sparks for every rotation of the rotor. The mechanical power from the rotor is coupled to an eccentric gear to the output shaft. This gear has a 3:1 gear ratio and the output shaft therefore rotates 3 times faster than the rotor. The output shaft is the equivalent of the crankshaft on a piston engine. Because RPMs are measured conventionally as the rotations of the crankshaft, the rotary engine requires one spark for every 'crankshaft' rotation, the same as a two-stroke engine.

## 6.2 *How the LMA-3 determines RPM*

The LMA-3 measures RPM not by measuring the number of pulses over a time period, as a tachometer does. That measurement would be too slow to provide adequate correlation between input channels. Instead the LMA-3 measures the time between input pulses and from that calculates RPM for each pulse measurement.

This measurement method has a few caveats though:

1. If the RPM pulse signal is derived from the ignition signal, a multi-spark ignition system will trigger the measurement multiple times for each pulse. This throws the measurement off because the LMA-3 does not know if the pulses are for each ignition event (one per cylinder cycle) or because of multispark. This is specially problematic because the number of multispark pulses also varies with RPM in a lot of ignition systems. Fortunately many multispark ignition systems output a tach signal with only one pulse per engine cycle. But some, notably Ford EDIS systems, output all pulses and therefore require a special tach adapter.
2. Odd fire engines, like V-Twin motorcycle engines and odd-fire V6 engines have ignition pulses that are not evenly spaced. For example a 60 degree V-Twin running at 10 degrees ignition advance will fire cyl. 1 at 10 degrees BTDC. Then fire cyl. Two 420 degrees later at 410 degrees. Then fire cyl 1 300 degrees later at 710 degrees. This means the ignition pulses sent to the LMA-3 are alternating between 420 and 300 degrees apart and therefore the time between pulses alternates. The LMA-3 therefore measures the times between ALL pulses for a complete engine cycle (2 rotations) and averages the times between them.

### 6.3 Programming the RPM input

- Determine the number of ignition pulses per crank rotation. Refer to Table 2 or 3 for guidance.
- Press the 'Channel' button until it shows channel 1.
- Press the 'Function' button until it shows 1 or 2. Use 1 if your engine's redline is below 10000 RPM. Otherwise use 2.
- Press the 'Calibrate' button until the selected Cyl. Number appears

Table 2: Cylinder number and RPM calibrate number 4 Cyl engine

Number of Cylinders	4-Stroke pulses/Crank -Rotation	Calibrate Number	Comment
1	1/2	1	Use also when using inductive clamp on spark wire or power wire of COP system of 1 cylinder only for all cylinder numbers
2	1	2	Use also when using inductive clamp on spark wire or power wire of Waste spark coil of 1 cylinder only. Waste spark system: 1 coil for every 2 cylinders.
3	1-1/2	3	
4	2	4	
5	2-1/2	5	
6	3	6	
8	4	8	
10	10	A	
12	12	C	

Table 3: Cylinder number and RPM calibrate number 2 Cycle and Rotary Engine

Number of Cylinders	2-Stroke pulses/Crank -Rotation	Calibrate Number	Comment
1	1	2	Use also when using inductive clamp on spark wire or power wire of COP system of 1 cylinder only for all cylinder numbers Also use for rotary engine.
2	2	4	Use also when using inductive clamp on spark wire or power wire of Waste spark coil of 1 cylinder only. Waste spark system: 1 coil for every 2 cylinders.
3	3	6	
4	4	8	
5	5	A	
6	6	C	

## 6.4 Using the LMA-3 with the Inductive Clamp

The inductive clamp measures the magnetic field created around a spark plug wire when spark current flows. If a metallic shield covers the spark plug wire, the inductive clamp may not work because the shield would short out the magnetic field. Like all inductive clamp rpm pickup devices, some ignition systems like Capacitive Discharge Ignition (CDI) or multi-spark ignition systems may not work properly with the inductive clamp pickup because the pulses created may be too short in duration. Multi-spark systems confuse the ignition timing measurement because the RPM converter cannot distinguish which ignition pulse belongs to which crank rotation. **The LMA-3 will work only on the tach output of the ignition system in this case.**

**The inductive clamp must be clamped around ONE lead only. Clamping it (for example) around all wires of a coil-on-plug pack does not allow it to work because the magnetic fields of the wires most likely cancel each other out.**

### 6.4.1 Inductive Clamp Usage

- Plug the inductive clamp's 3.5mm audio plug into the RPM socket of the LMA-3.
- Clamp the Inductive Clamp on the spark plug wire of one cylinder so the wire is completely surrounded by the clamp.
- Make sure the clamp is completely closed.
- Start the engine.
- Switch on the LM-1 unit.

The decimal point of the digit display of the LMA-3 should light up steadily. This indicates when a valid RPM signal is detected. If it does not light up, or lights up intermittently, reposition or reverse the clamp (try clamping it upside down). If the decimal point out only occasionally, that is OK. The RPM converter will still convert, though its output might be noisy. A noisy output has spikes or lengthy flat areas in the data log. *[Note: to work properly with the inductive clamp pickup the LMA-3 must be set up for the appropriate number of pulses per crank rotation.]*

- For a 4 stroke engine without waste spark ignition, this would be 1 pulse per 2 crank rotations. This is the factory setting.
- For a 4 stroke engine with waste spark ignition, or a 2 stroke engine, this would be 1 pulse per crank rotation.
- For a rotary engine, this would be 1 pulse per rotation. This is the same as for a 1-cyl 2-stroke motor.

***Note: On any distributor-less ignition system you can alternately clamp the inductive clamp around one of the power wires on the primary side of the ignition coil or coil-on-plug module.***



## **6.5 Using the RPM-Converter with pulsed RPM input (Tach) signals**

- Unplug the inductive clamp from the LMA-3 if connected.
- Connect the RPM signal to the CH1+ input screw terminal.

The decimal point of the digit display of the LMA-3 should light up steadily. This indicates when a valid rpm signal is detected. If it does not light up, check your connections.

**DO NOT CONNECT A PULSED RPM SIGNAL TO THE INDUCTIVE CLAMP INPUT. THIS MIGHT DAMAGE THE LMA-3 OR LM-1.**

## **7 Measuring Pressures**

The LMA-3 has a built in MAP sensor. To use it, connect a small ¼" hose between a vacuum/boost connection AFTER the throttle body and the LMA-3 MAP input port. It should be connected after the throttle body because the lowest pressure that can be measured before the throttle body is atmospheric pressure (discounting some pressure losses from the intake tract before the throttle body).

MAP stands for Manifold Absolute Pressure. This means that the sensor measures pressure referenced to absolute vacuum, not atmospheric pressure like many vacuum and boost gauges. Engine parameters like fueling, ignition timing, compressor efficiency and so on are dependent on the MASS of air (in pounds per cubic foot or kg per cubic meter) entering the engine. As air is a gas, it's mass is dependent on it's ABSOLUTE pressure, referenced to absolute vacuum and it's temperature.

Most vacuum and boost gauges are gauge pressure sensors. A gauge pressure sensor measures the difference to atmospheric pressure, not the absolute pressure. So, without knowing atmospheric pressure at the point where the sensor gets it from, the actual air-mass entering the engine can't be measured. Because the atmospheric pressure changes with altitude and weather, the gauge pressures are not a precise metric. This is specially problematic for boost pressure sensors, because their atmospheric reference source comes typically from inside the cabin or engine compartment. The atmospheric pressure there can change with speed from aerodynamic effects (ram pressure).

### **7.1 Measuring MAP**

Function 1 of input 4 of the LMA-3 measures absolute pressure with a range of 0..1 bar (0..14.7 PSIa). This is the range intended for normally aspirated engines where the maximum intake pressure can be atmospheric pressure.

Function 2 of input 4 of the LMA-3 measures absolute pressure with a range of 0..3 bar (0..44.1 PSIa). This is the range intended for boosted engines where the maximum intake pressure can be up to 29.4 PSI above atmospheric pressure.

### **7.2 Measuring boost/vacuum**

The LMA-3 can use it's MAP sensor also as gauge pressure sensor if so desired. As stated above, this is NOT the preferred way of measuring pressures, but it is possible. The LMA-3 will measure the current atmospheric pressure in the intake tract when it starts up and stores this

value internally until it is started the next time. In vacuum/boost measurement mode the LMA-3 will then subtract the measured value from the MAP value internally.

For this to work, the LMA-3 MUST be powered by a switched 12V source that switches on before the engine is started, like the ignition power. This 12V source MUST stay active during cranking. To give the LMA-3 a chance to measure atmospheric pressure, you must change the way you start the engine. First, switch ignition on (powering the LMA-3), wait for 0.5 seconds, THEN crank the engine (starter).

Function 3 of input 4 of the LMA-3 measures vacuum with a range of 0..30 inHg (gauge) This is the range intended for normally aspirated engines where the maximum intake pressure can be atmospheric pressure.

Function 4 of input 4 of the LMA-3 measures vacuum and boost pressure with a range -14.7 to 29.4 PSIG This is the range intended for boosted engines where the maximum intake pressure can be up to 29.4 PSI above atmospheric pressure. Vacuum is typically measured here as negative PSI. But you can set up any metric you want with LogWorks 2.

## 8 Measuring Frequencies, custom RPM, or speed

The LMA-3 has the capability to measure frequencies on channels 3, 4, and 5. It converts a frequency signal (pulses per second) into a voltage (0..5V) to be logged in the LM-1 or a number between 0 and 1023 to be logged directly by LogWorks. This is useful for measuring custom RPM ranges, signals from speed sensors or the frequency of MAF sensors with frequency output (as opposed to voltage output MAF sensors).

The range of frequencies that the LMA-3 can measure can be programmed by with LM Programmer. The LMA-3 can be set to any frequency range between 0 and 30 Hz for the full 0..5V range to 0..15 kHz for the full 0..5V output (logging) range.

Also, LM Programmer has convenient conversions built in, so you don't have to calculate the resulting frequency ranges for speed sensing or RPM sensing yourself. See chapter 10.x for details.

A frequency input signal must have an amplitude (voltage range of pulse) between 0.5V at the low pulse point to minimum of 3V and maximum of 40 V at the high pulse range.

### **NOTE:**

***The custom RPM feature will work only for even fire tach signals, not for tach signals that vary their time between pulses during an engine cycle. Use the input 1 RPM functions instead.***

## 9 Measuring duty cycle

To measure the duty cycle of a signal in channels 3, 4, and 5, the input signal must cover the same voltage range as for a frequency signal. Duty cycle is defined as the ratio between the time a signal is active and the total time of the active and inactive time. A signal can be either active high ( the event, like injector open, happens when there is a high voltage) or active low (the event happens when the measured signal is at ground or close to it).

Very often the injector duty cycle is to be measured by the LMA-3. A typical fuel injector is connected to 12V on one side, while the other side is connected to ground when the ECU opens

the injector. Because the pulse is therefore active when the voltage on the pin is at ground, negative duty cycle is measured.

So called peak-hold injectors (as opposed to saturated injectors), work differently. Their drive signal first goes to ground for a high current opening pulse, then rises to 8-10 Volts for the hold period. Because the LMA-3 sees everything above 2.5V as "high", it will be able to see only the peak period. On some peak-hold systems it is possible to connect the CHx+ input of the LMA-3 to 12V at the injector and connect the CHx- input to the injector signal to still measure correctly. But that is not always the case. The LogWorks 2.0 Manual shows an alternative method. If the above method works, it actually measures positive duty cycle.

## 10 Measuring external 5V sensors

Each of the 5 channels on the LMA-3 can be configured to accept input from an external 0..5V sensor. Hookup is very straight forward, with ground going to the '-' input for the channel and the positive sensor signal going to the '+' input for the channel. Raw sensor data can be converted into meaningful units and values using the input configuration features of LogWorks on a PC.

### 10.1 Calibrating external 5V inputs

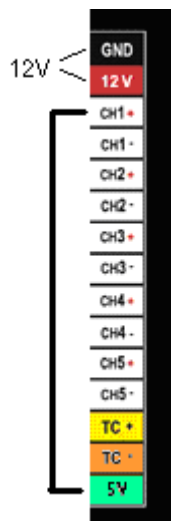
LMA-3 external inputs are factory calibrated. However, depending on a number of factors it is not unusual to see a small discrepancy between values read on an external voltmeter and those read by LogWorks from an LMA-3. If higher precision is required, the LMA-3 can be field calibrated.

The following calibration instructions all assume that the input being calibrated has already been configured for external input. Either using LM Programmer or the front panel interface.

#### 10.1.1 Calibrate using built-in sensor power

In order to calibrate using the built-in sensor power, the following steps must be taken.

- Connect the LMA-3 to external 12V power
- Connect a jumper wire between the 5V sensor output and the '+' terminal for the input to be calibrated



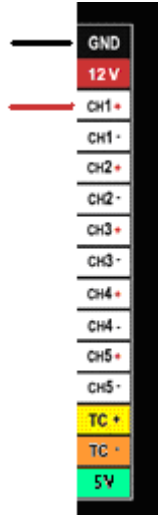
- Press the Channel button until the channel number to be calibrated is displayed
- Press and hold the Calibrate button while the channel number is still displayed

The LMA-3 will either display a lower case 'c' to indicate the Calibration has occurred for the selected channel or an upper case 'E' to indicate that the calibration could not occur. Normally an E indicates that the voltage being input is .1V or more off from 5V.

#### 10.1.2 Calibrate using external sensor power

In order to calibrate using external sensor power, the following steps must be taken.

- Connect the ground from the external sensor supply to the GND connection on the LMA-3
- Connect the +5V from the external sensor supply to the '+' input of the channel to be calibrated



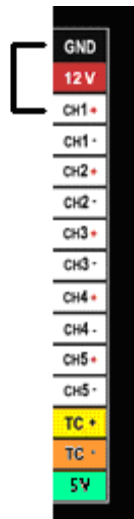
- Press the Channel button until the channel number to be calibrated is displayed
- Press and hold the Calibrate button while the channel number is still displayed

The LMA-3 will either display a lower case 'c' to indicate the Calibration has occurred for the selected channel or an upper case 'E' to indicate that the calibration could not occur. Normally an E indicates that the voltage being input is .1V or more off from 5V.

### 10.1.3 Restoring a channel to factory calibration

In order to restore an external input back to the factory default calibration, the following steps must be taken.

- Connect a jumper wire from the '+' input of the channel to be restored to the GND connection on the LMA-3



- Press the Channel button until the channel number to be calibrated is displayed
- Press and hold the Calibrate button while the channel number is still displayed

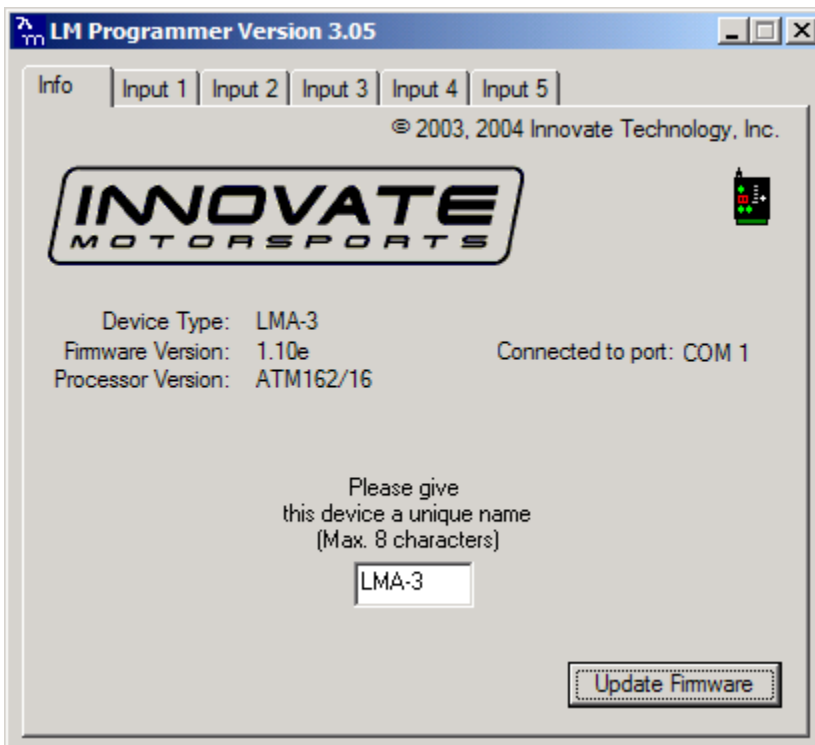
The LMA-3 will either display a lower case 'd' to indicate the defaults have been restored for the selected channel or an upper case 'E' to indicate that the restoration could not occur. Normally an E indicates that more than .1V is being detected on the selected input.

# 11 Programming the LMA-3 with LM Programmer

To connect the LMA-3 for programming follow these steps:

1. Insert the terminator plug (included 2.5 mm stereo connector without wire) into the Serial IN port. Make sure it is seated fully.
2. Connect the 2.5mm to DB 2 computer interface cable into the Serial OUT port. Your computer needs a serial port. If it does not have one, you will need a USB to serial adapter.
3. Power the LMA-3 either from 12V, a 9V battery or by connecting it to an LM-1 as described in chapter 3.1.
4. Start the LM Programmer application

The following screen will show up:



The LM Programmer software then shows in its first page the type and version number of the firmware of the device.

## 11.1 Changing the device name

If multiple LMA-3's are used in a Log-Chain, each MUST be given a unique name so that LogWorks can identify each LMA-3. Just enter a name in the edit box in this page.

## 11.2 Updating the firmware

Click on the 'Update Firmware' button. You will be presented with a file dialog box that allows you to select a firmware file. Firmware files end with the file extension .dld.

LMA-3 firmware file names start with: AUXB1 for AuxBox 1. The first part is followed by a dash, then a V, then the version number without dots.

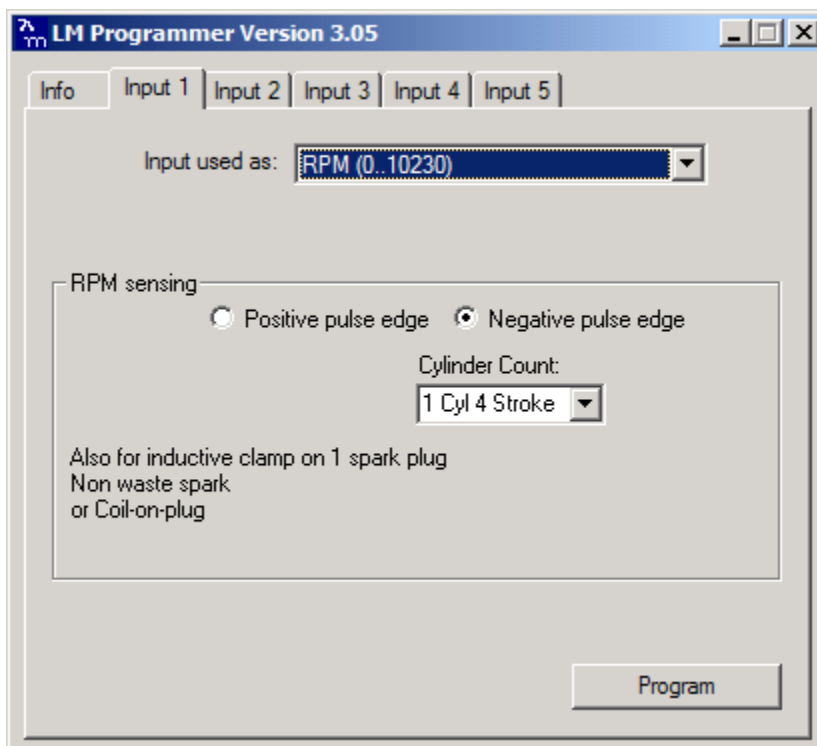
Example: LMA-3 firmware version 1.00 alpha release would have the file name AUXB1-V100A.dld LAM-3 firmware version 1.00 would have the file name AUXB1-V100.dld

After you opened the firmware file, this new firmware will be downloaded in the LMA-3 device.

## 11.3 Input 1 Configuration

Click on the Input 1 tab in the top of the window.

### 11.3.1 Measuring RPM



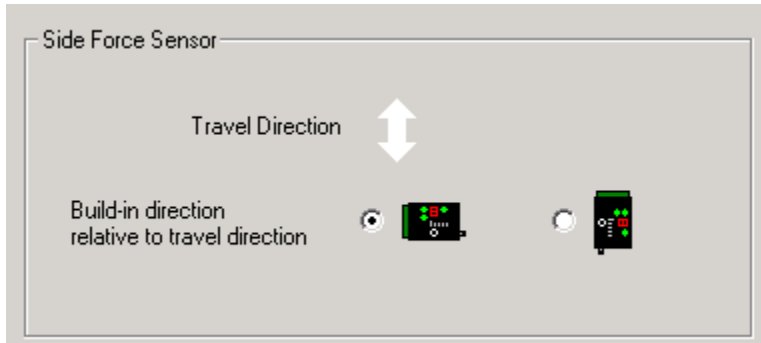
The drop-down list at the top of the window allows you to select the different functionality for that input. If RPM is selected, the area below the functionality selection shows as above.

Select the cylinder count in the appropriate drop-down list.



## 11.4 Input 2 Configuration

Function 1 and 2 of Input 2 use the TK+ and TK- inputs.  
The CH2+ and CH2- inputs are used ONLY if this input is set for "external 0..5V sensor"  
When selecting one of the side-force modes for Input 2, the center window looks like this:



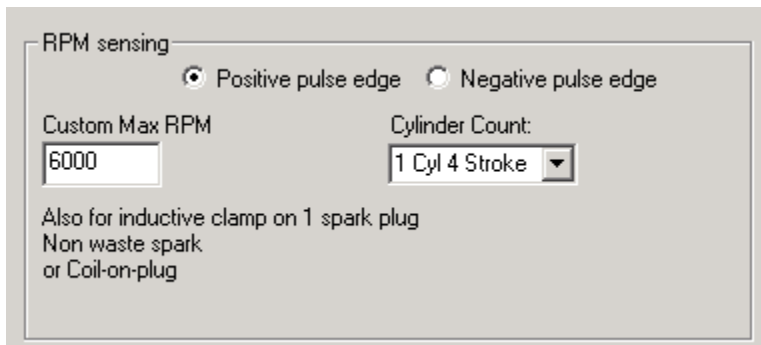
Select the travel direction of the car. Please note that changing this setting will effect the travel direction setting for acceleration measurements on Input 5 as well.

## 11.5 Input 3 configuration

Input 3 has by default duty cycle measurement as function 1. See chapter 10 for details. Duty Cycle measurement is also available on Inputs 4 and 5.

### 11.5.1 Measuring Custom RPM

When using the custom RPM feature the center area looks like this:



On the left edit box you can specify the max RPM for this measurement channel. In the example case the max RPM is 6000. This means that in LogWorks 6000 RPM is equivalent to 5Volt. This allows LogWorks to have a higher RPM resolution (~ 6 RPM per step instead of 10 RPM when the range is 0..10230 RPM). This functionality is also available for Inputs 4 and 5.

### 11.5.2 Measuring Frequency

The center section of the window changes to this:

Frequency measurement

Full Scale Frequency must be between 10Hz and 15kHz

Full Scale Frequency  Hz

You can enter any frequency between 10 Hz and 15000 Hz as full scale frequency. LMA-3 measures the frequency with a resolution of 0.1 % of the full scale frequency specified. So in LogWorks 0 Hz is always 0 Volt, and the full-scale frequency is equivalent to 5 Volt. This functionality is also available for Inputs 4 and 5.

### 11.5.3 Measuring Speed

Select the Speed sensing function in the topmost drop-down list. The center section of the window changes to:

Speed sensor setup

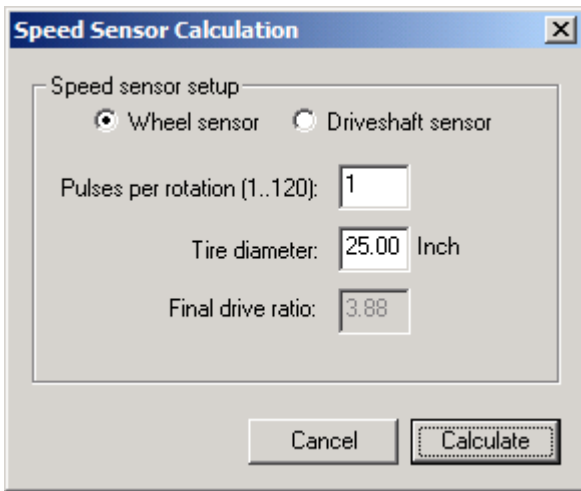
Metric Units  US Units

Max Speed:

Pulses per mile

With the radio buttons you can select to use metric (km/h) or US (mph) units. In the left drop-down list you select the max speed to be measured. The LMA-3 measures the speed with a resolution of 0.1 % of the selected max speed.

In the right edit box you enter the pulses per mile the speed sensor produces. Speed sensors are typically pulse sensors mounted either on the drive-shaft or wheel. To calculate the pulses per mile (or km/h) click on the calculate button:



Select if you use a drive-shaft sensor or a wheel sensor. Enter the pulses per rotation created by the sensor either as driveshaft rotation or wheel rotation. You also need to enter the wheel diameter, and in case of a drive-shaft sensor, the final drive (differential) ratio.

The LM-Programmer will calculate the pulses per mile (km) for you.

This functionality is also available for Inputs 4 and 5.

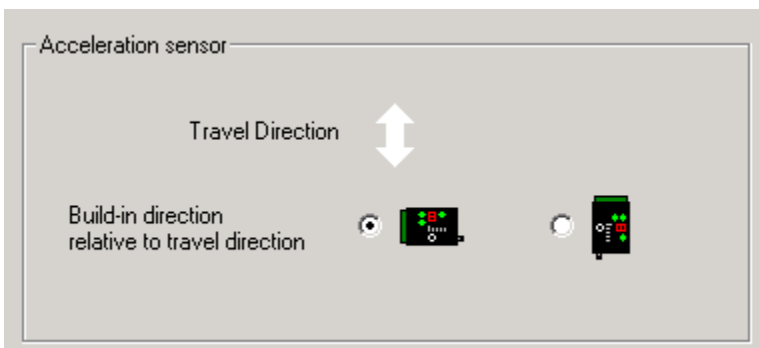
### **11.6 Input 4 configuration**

Function 1,2,3 and 4 on this input are used for pressure measurement.

### **11.7 Input 5 Configuration**

For Custom Frequency, Custom RPM, speed sensing and duty cycle inputs on Input 5, see chapter 12.5

When selecting one of the acceleration measurement modes for Input 5, the center of the window changes to this:



Select the travel direction of the car. Please note that changing this setting will effect the travel direction setting for side force measurements on Input 2 as well.

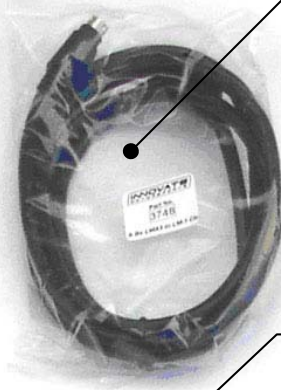
# 12Kit Contents

AuxBox P/N: 3742

**Programmer Cable  
P/N: 3746**



**LMA-3 to LM-1 Cable  
P/N: 3748**



**Accessory Kit  
P/N: 3749**



**Terminator Plug  
P/N: 3750**



**LMA-3 AuxBox**



## **Appendix A: Limited Warranty**

### **LIMITED WARRANTY**

Innovate stands behind the quality of its products. Innovate makes the following warranty to purchasers of its products: All new Innovate products carry a six-month warranty from the date of purchase. If proof of purchase cannot be provided, warranty will be determined by date of manufacture.

### **When Warranty Void**

This warranty shall terminate and Innovate shall have no obligation pursuant to it if (i) your Innovate product has been modified or repaired in a manner not previously authorized by Innovate in writing, (ii) the identification markings on your Innovate product have been removed, defaced, or altered; (iii) your Innovate product was subjected to accident, abuse, shipping damage, or improper use; (iv) your Innovate product was not used or configured as specified in the product manual; or (v) your Innovate product was subjected to operating conditions more severe than those specified in the product manual.

### **Exclusions From This Warranty**

Oxygen Sensors are excluded from this warranty.

### **Repairs Under This Warranty**

In the unlikely event that your Innovate hardware product should prove defective during the warranty period, contact Innovate Customer Support for a return material authorization (RMA) at 949-502-8400. Products returned for service must be securely packed to prevent damage and shipped charges pre paid, along with proof of purchase and the return material authorization number, to the Innovate repair location as instructed by Customer Service. Innovate within a reasonable amount of time from its receipt of your product so shipped, will ship to you, at its option, the repaired product or a new or reconditioned product of comparable or greater specified functionality. All repaired or replacement products shall be warranted for the remainder of the original product warranty.

### **Disclaimer**

INNOVATE MAKES NO OTHER EXPRESS OR IMPLIED WARRANTY WITH RESPECT TO YOUR INNOVATE PRODUCT OTHER THAN THE LIMITED WARRANTY SET FORTH ABOVE. No Innovate dealer, agent, or employee is authorized to make any modification, extension, or addition to this warranty, unless enforceable or unlawful under applicable law, INNOVATE DISCLAIMS ALL IMPLIED WARRANTIES, INCLUDING THE IMPLIED WARRANTIES OF MERCHANTABILITY, NONINFRINGEMENT, AND FITNESS FOR A PARTICULAR PURPOSE, AND THE LIABILITY OF INNOVATE, IF ANY, FOR DAMAGES RELATING TO ANY ALLEGEDLY DEFECTIVE PRODUCT SHALL UNDER ANY TORT, CONTRACT, OR OTHER LEGAL THEORY BE LIMITED TO THE ACTUAL PRICE PAID FOR SUCH PRODUCT AND SHALL IN NO EVENT INCLUDE INCIDENTAL, CONSEQUENTIAL, SPECIAL, OR INDIRECT DAMAGES OF ANY KIND EVEN IF INNOVATE IS AWARE OF THE POSSIBILITY OF SUCH DAMAGES. Some states do not allow limitations on how long an implied warranty lasts or the exclusion or limitation of incidental or consequential damages, so the above limitations or exclusions may not apply to you.

## 13 Revision History

### **1.0 -- 8/23/04**

Initial release.

### **1.1 -- 8/31/04**

Corrected miscellaneous typographical errors.

### **1.2 -- 9/1/04**

Corrected table 1 and section 6.

### **1.3 -- 9/20/04**

Corrected miscellaneous typographical errors.

### **1.4 -- 8/19/2005**

Changed to reflect functionality of firmware 1.1.

### **1.5 -- 8/22/2005**

Changes: Added 3-button Accel reset to 4.1 ( needs graphic), Changed 8.1 ( check graphic),  
Min freq=30Hz 9.0,

### **1.6 -- 1/8/2006**

Changes: Intro text 1.0, Added Accel graphic to 4.1, fixed paragraph spacing 8.0, added new 11  
on external input and calibration

### **1.7 -- 1/8/2006**

Changes: VR Sensor info, typographical errors, extra ignition info

### **1.8 -- 9/14/07**

Added Kit Contents section

### **1.9 -- 12/01/08**

Removed unsupported functions